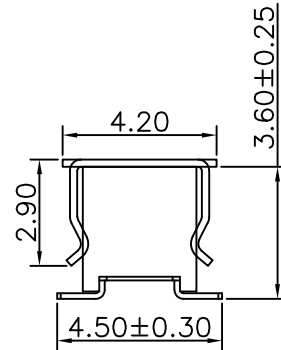
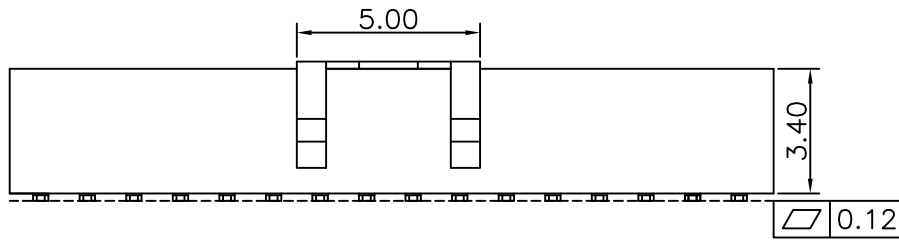
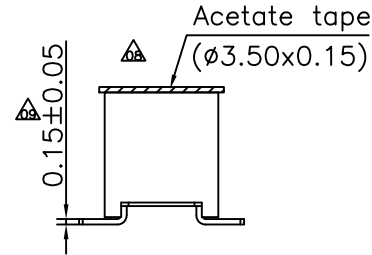
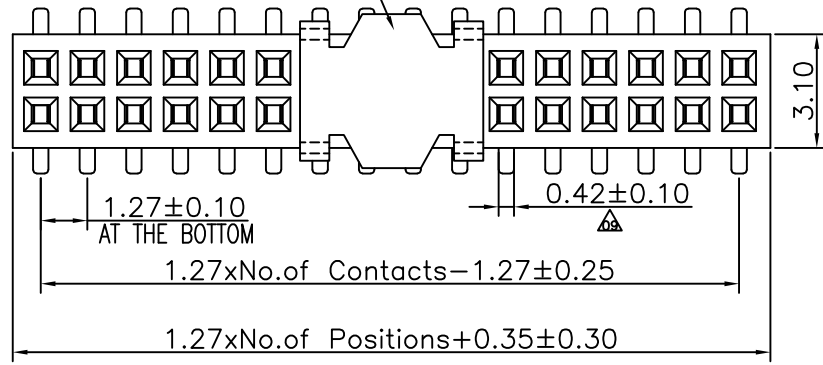


REV.	LOCAS.	DESCRIPTION	DATE	DRAWN
06	△	增加膠布配方	2009.10.21	車 激
07	△	變更圖號與注解	2011.09.22	黃明霞
08	△	為防止方形膠紙鬆脫, 變更為圓形膠紙	2012.09.04	黃小燕
09	△	依業務要求增加端子公差	2017.07.10	何東華
10	△	依業務要求增加熱插拔要50次以上文字說明	2019.06.14	何東華

The cap used above 4pin

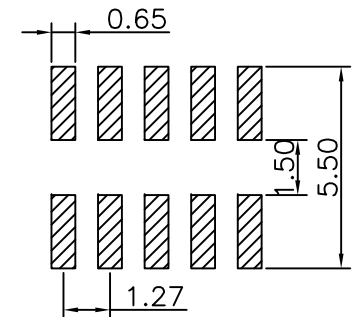


Specifications
 Current Rating:1Amp
 Insulation Resistance:1000MΩMin.
 Dielectric Withstanding Voltage:300VAC
 Contact Resistance:20mΩMax.
 Operating Temperature:-40°C to +105°C
 Materials

△ Contact Material:Phosphor Bronze
 Insulator Material:High Temperature Thermoplastic, UL 94V-0 LCP or the equivalent material △
 All materials must meet Greenconn requirement for environment protection.

△ guaranteed insertion and removal times 50 times at least

Recommended P.C.Board Layout
 (Tolerance:±0.05)



△ Ordering Information

C SEC207 - XX XX A 001 C 1 A X

No. of Pins per Row
02~50

Standard Plating
02=Gold Flash
Selective Plating
01=Tin
05=Gold Flash/Tin

Color
1=Black

Standard Packing
C=Tube
Selective Packing
A=box
E=Cap+Tube
F=Cap+Tape&Reel
G=Acetate tape+Tube
H=Acetate tape+T&R

贛州市创盟电子科技有限公司

GENERAL TOLERANCE	
X.±5.0'	X.±0.30
.X'±3.0'	.X±0.25
.XX'±2.0'	.XX±0.15
.XXX'±1.0'	.XXX±0.10

DESIGNED: 何東華	DATE: 2019.06.14
CHECKED: 林萬輝	DATE: 2019.06.14
CO SIGNED: 廖世龍	DATE: 2019.06.14
APPROVED: 李 輝	DATE: 2019.06.14

DWG. NO.	△ △ CSEC207-CA1CA
PART NO.	△ CSEC207-XXXX A001C1AX

TITLE.	1.27 FEMALE HEADER DUAL ROWS SMT TYPE W/POST
--------	--

REV.	UNIT.	SCALE.	PAGE.
10	mm	5:1	1/1